

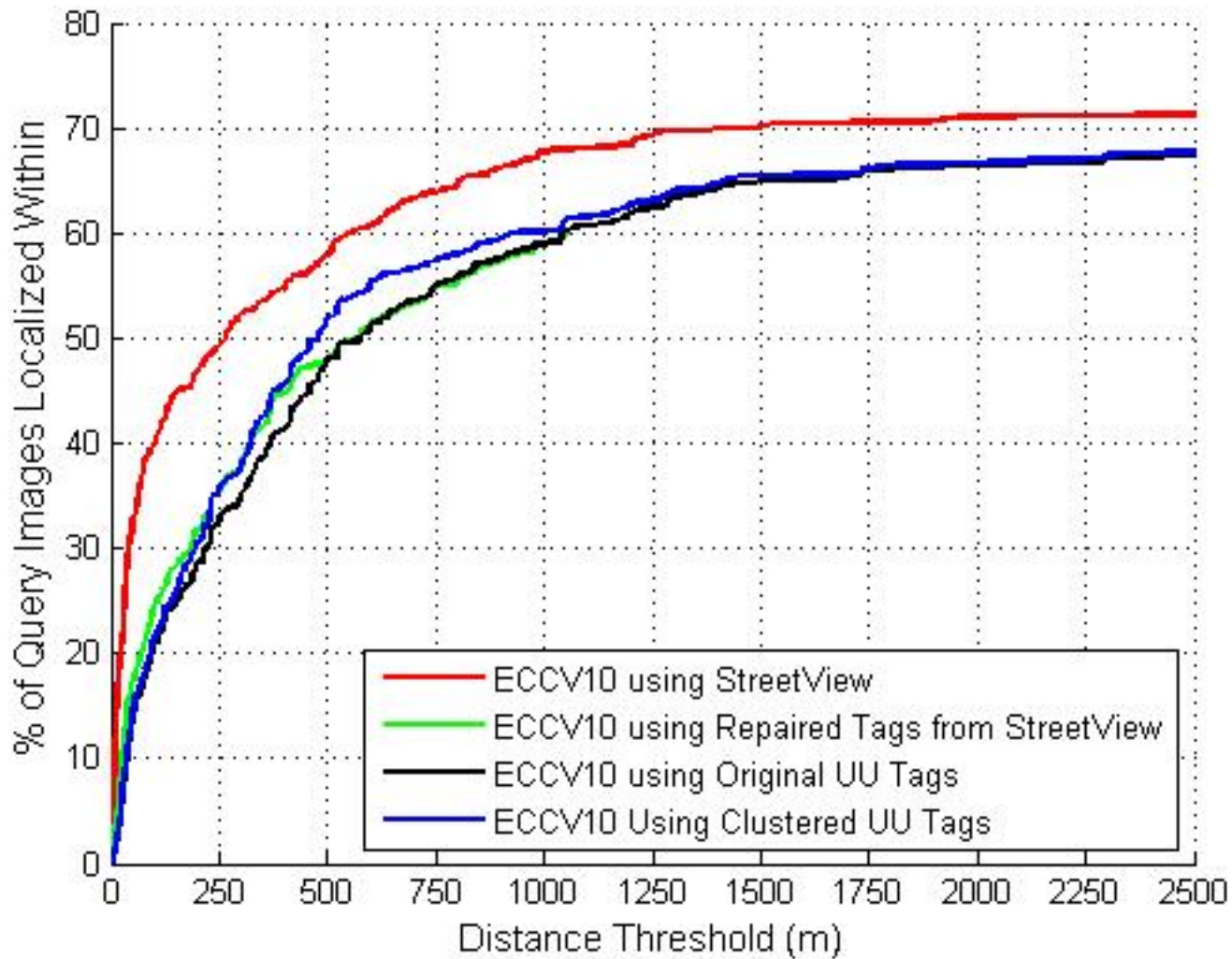
# Improving Image Geotags

Corey Pittman  
Week 11

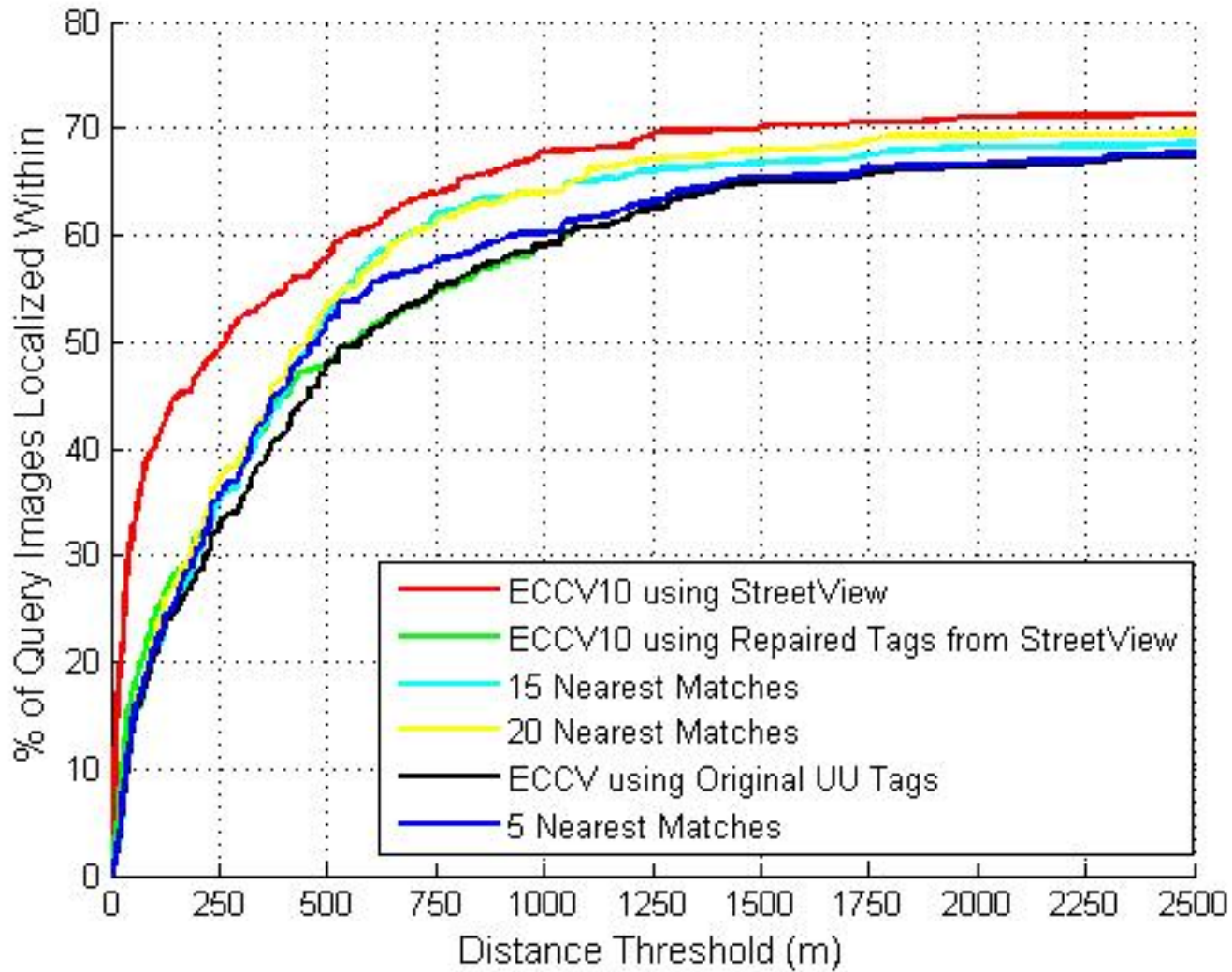
# Improvements

- Increasing number of nearest matches improves results for Clustering.
- Shows no similar improvements in:
  - Maximum Likelihood Estimator
  - Z-Score Outlier Removal

# Last Week



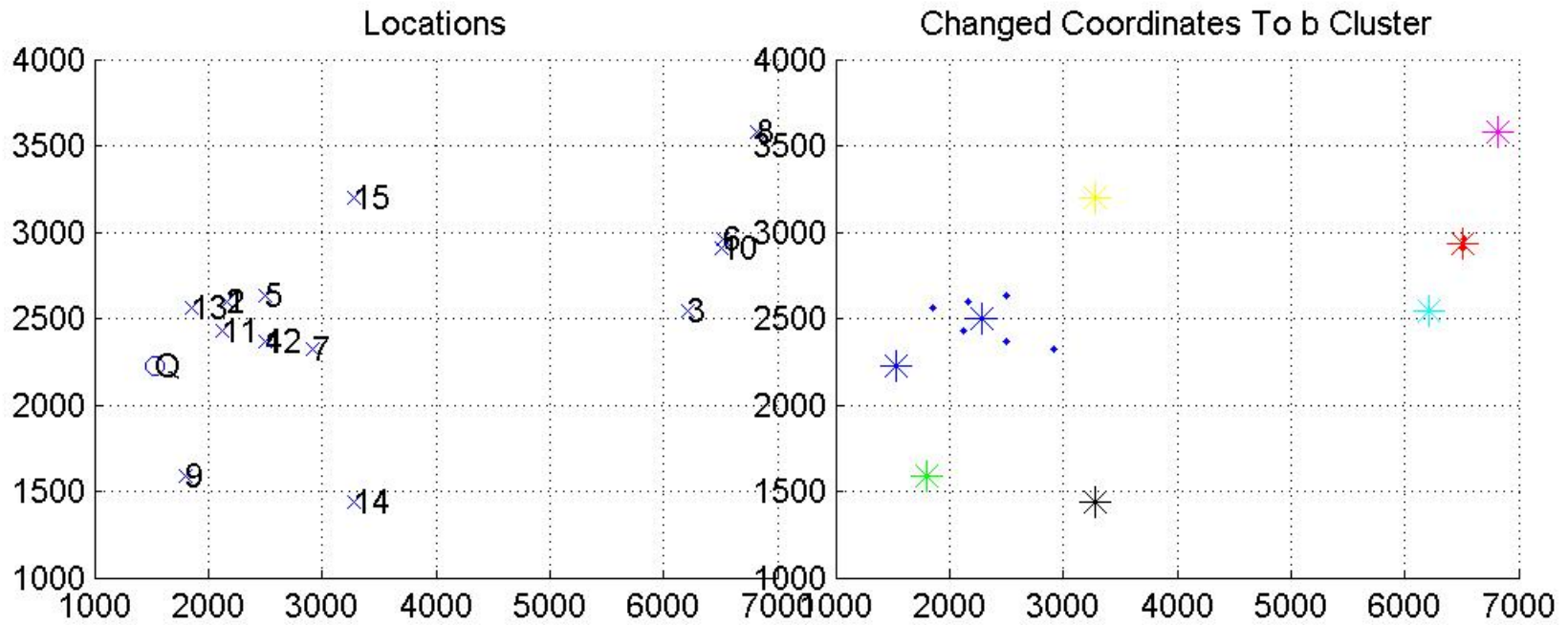
# This Week



# Comparisons

- When running with both peak parameters (20 NM & 500 Bandwidth), clustering primarily shows improvements in the center of the curve.
- Improving using Street View gives best improvement at lower parts of curve.
- Without a better baseline, conclusions cannot be made about overall improvement.

Current Image = 494



Current Image = 546



1



2



3



4



5



6



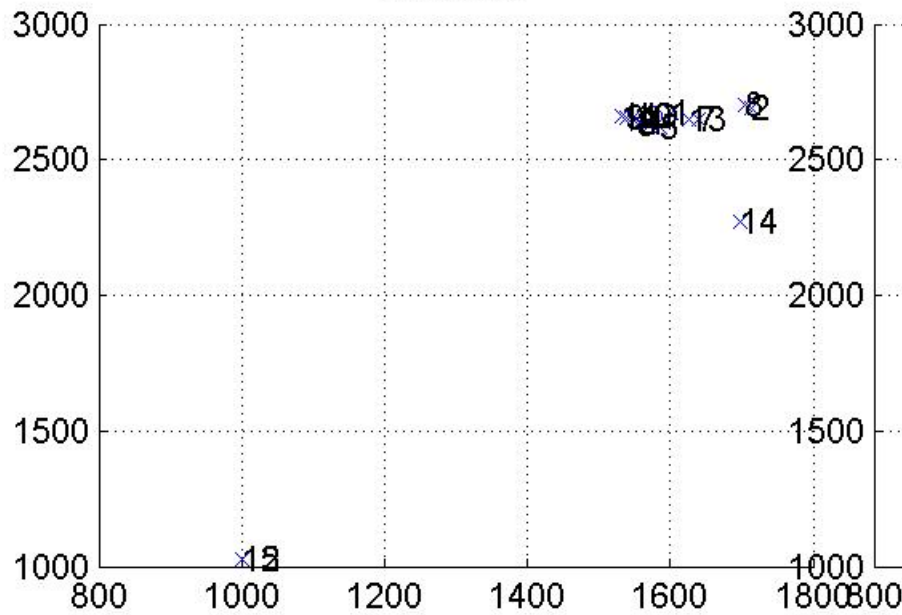
7



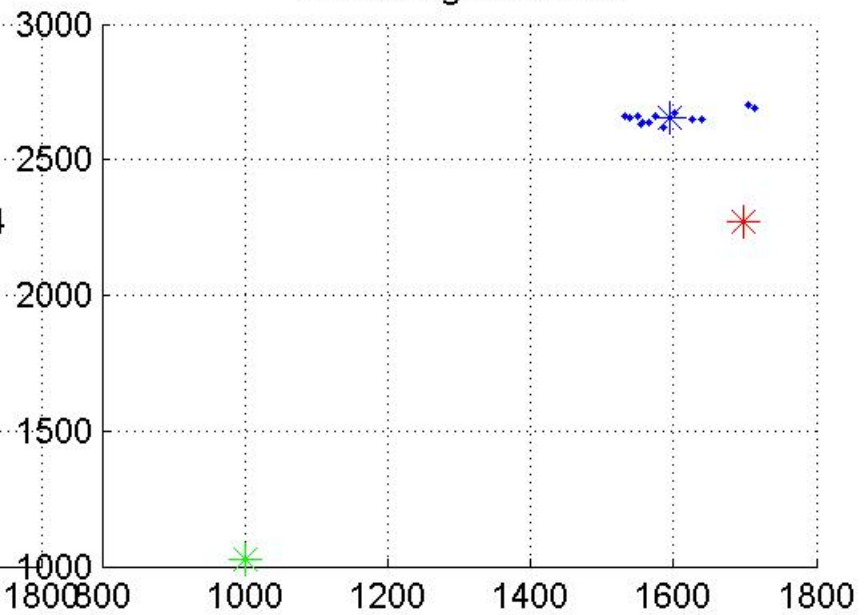
8



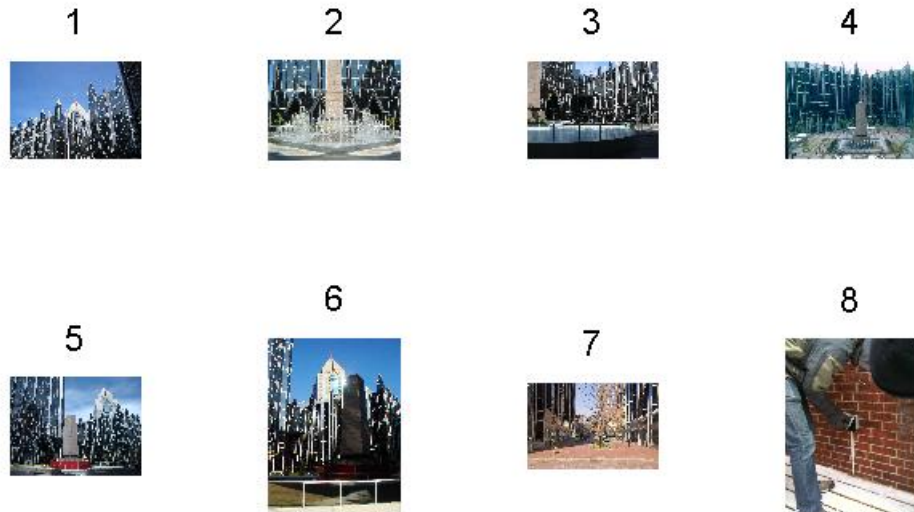
Locations



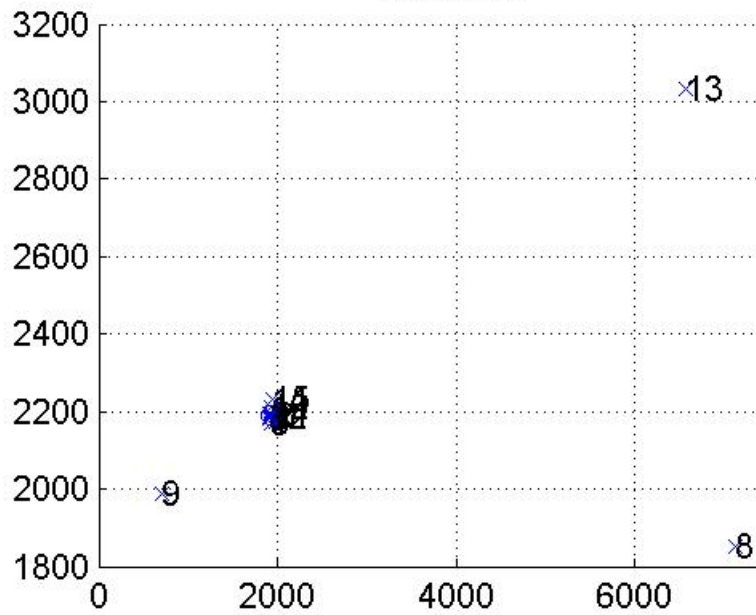
Inside Largest Cluster



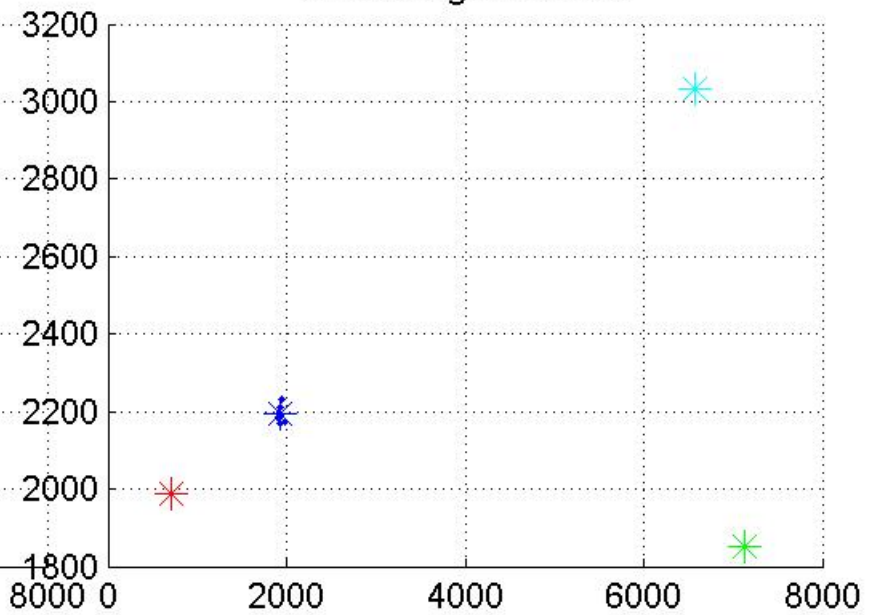
Current Image = 1455



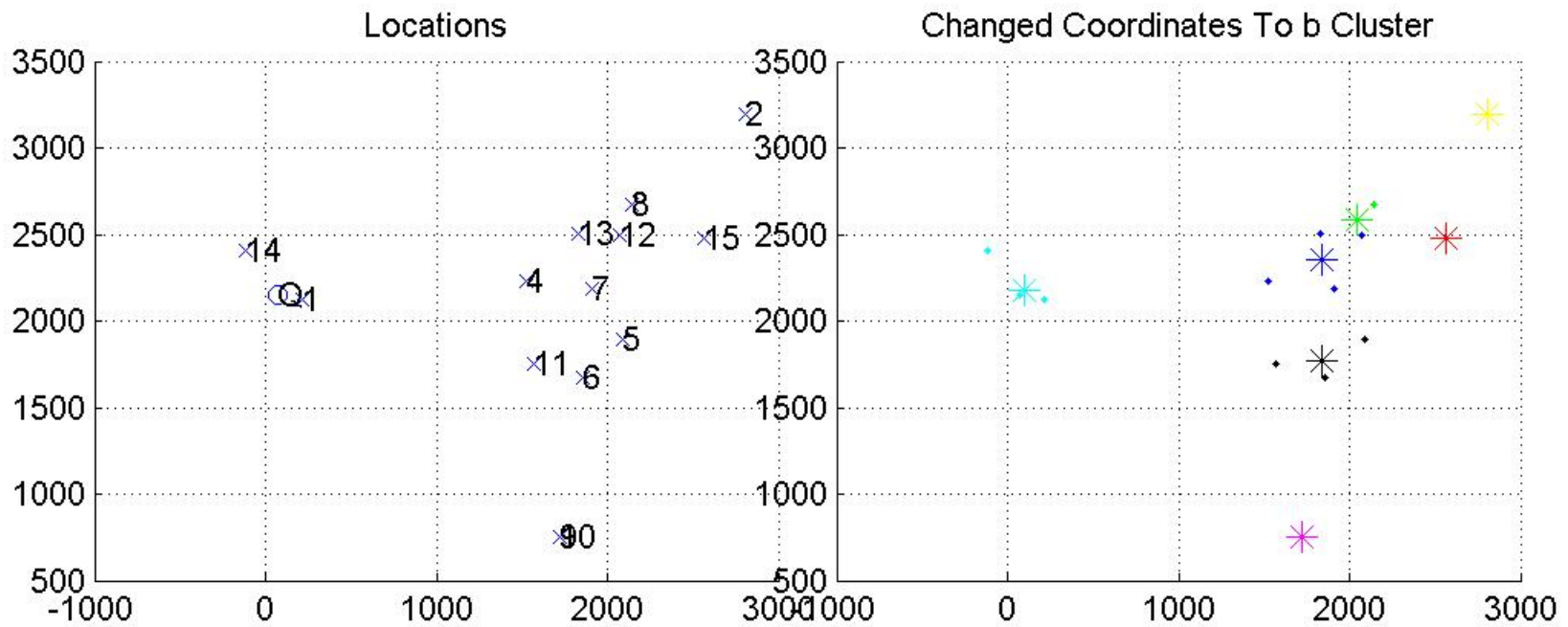
Locations



Inside Largest Cluster







# Observations

- Curves are possibly misleading. Clustering increases error for some, and decreases for others. Decreases overall.

